

EMBRACE THE ART OF EXQUISITE LIVING



REGENT

Kashi Kunj

Spaces for Limitless Living

Nestled in Vile Parle East, Regent Kashi Kunj stands as a premier residential project, featuring exquisitely designed apartments that embody luxury and tranquility. This modern 12 storeyed masterpiece by Regent Group offers 1&2 BHK homes with a unique blend of opulence and privacy. The project is a beautiful homage to aesthetically designed living spaces and well planned amenities that convey feelings of comfort and absolute convenience.

Located in the prime locality of Vile Parle East, Regent Kashi Kunj has easy accessibility and proximity to social infrastructure like markets, educational & medical facilities, places of worship etc which provide a perfect harmony between modern living and daily convenience. Home buyers enjoy smooth connectivity throughout the city with easy access to T-2 and T-3 Terminals, S.V. Road, the Western Express Highway, Gundavli & WEH Metro Station, and Vile Parle Railway Station.

Inside the Apartment

- High Quality Vitrified Flooring in Living, Dining and Bedrooms.
- Kitchen with granite platform and S.S. Sink.
- French windows with Anodized frames.
- Designer sanitaryware and fixtures.
- Designer modular switches and fixtures.
- Video door phones.
- 3 phase concealed copper electrical wiring with adequate A.C., T.V, Telephone points.

External Facilities

- Recreation room / yoga room for members
- Mechanical car parking
- 24x7 CCTV surveillance system



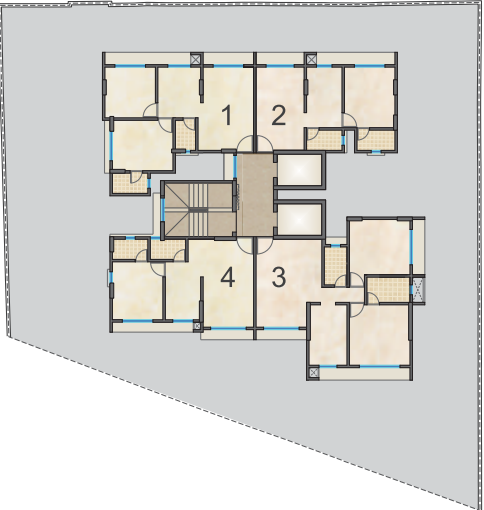
Stock Image



Stock Image



Artist's Impression



9TH TO 12TH FLOOR PLAN

Flat no.	Type	Rera Area
1	2 BHK	558.86 sq.ft
2	1 BHK	442.50 sq.ft
3	2 BHK	723.66 sq.ft
4	1 BHK	464.14 sq.ft



The Regent Group began its illustrious journey in 2007 with the resolve to deliver only the best in realty projects and the vision to consistently introduce to communities, a higher lifestyle standard. They work with a passion for perfection and do well to exceed and go beyond expectations. The dynamism of the Regent group and its associate groups has won them accolades for their array of completed projects that span Residential Complexes, luxury homes as well as Commercial projects in Vile Parle, Andheri, Goregaon and Girgaon.

Regent Galaxy, Malad (W)

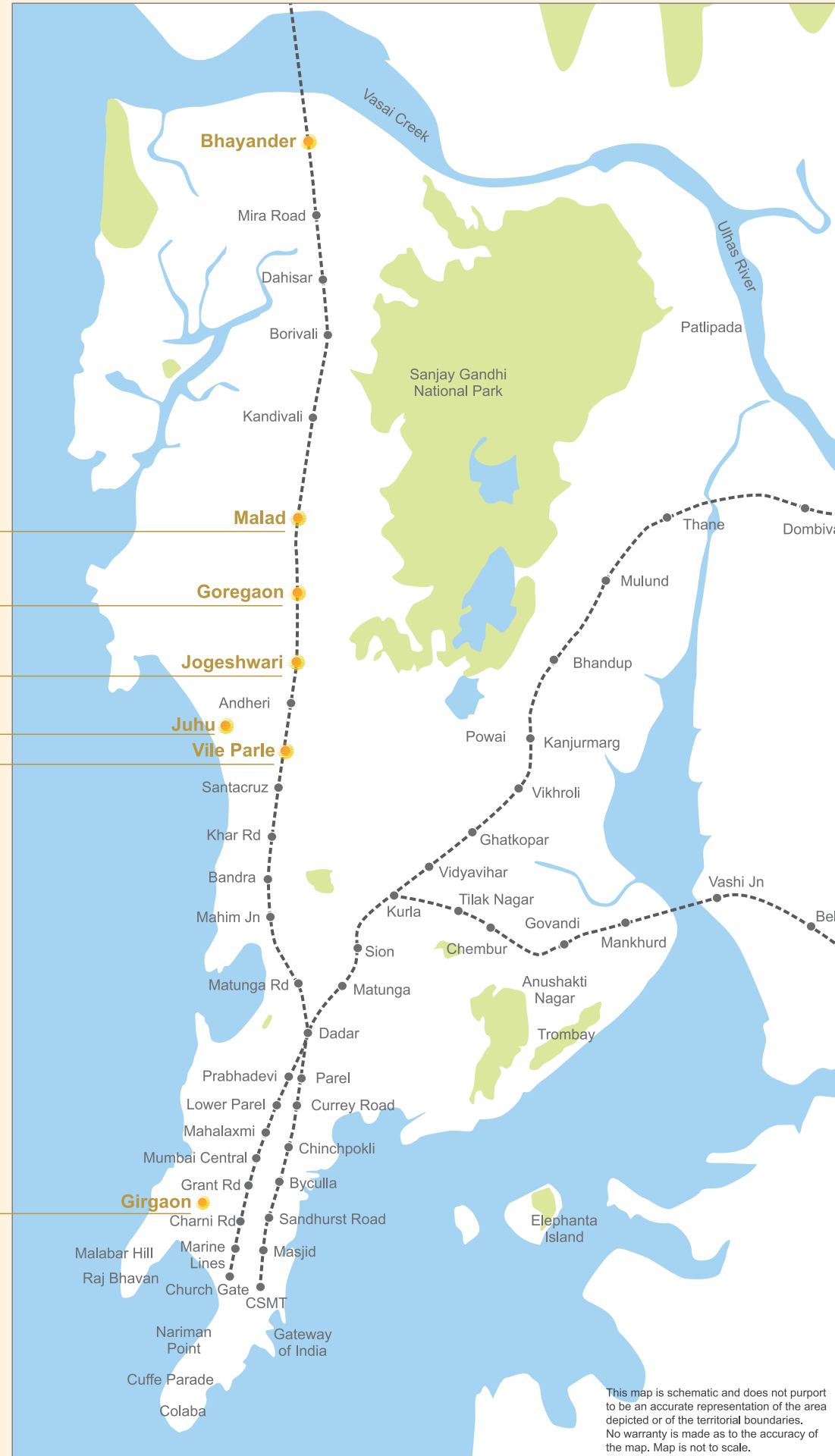
Raj Rudram, Goregaon (E)

Radha Residency, Jogeshwari (E)
Regent Milan Chhaya, Jogeshwari (E)

Advent Neel, Juhu
Raj Deep, Juhu
Raj Vastu, Juhu

Aangan, Vile-Parle (E)
Airport View, Vile-Parle (E)
Audumbar, Vile-Parle (E)
Deepa, Vile-Parle (E)
Ganesh Smruti, Vile-Parle (E)
Om Madhusadan, Vile-Parle (E)
Parle Geeta, Vile-Parle (E)
Regent Aparna Mahal, Vile-Parle (E)
Regent JeevanTara, Vile-Parle (E)
Regent Kashi Kunj, Vile-Parle (E)
Regent Vasudev 99, Vile-Parle (E)
Raj Mohan, Vile-Parle (E)
Raj Pushp, Vile-Parle (E)
Raj Vaibhav, Vile-Parle (E)
Saket, Vile-Parle (E)
Sudarshan, Vile-Parle (E)
Tejal Bhuvan, Vile-Parle (E)
Trishla, Vile-Parle (E)

Regent Aurum, Girgaon



ONGOING PROJECTS



REGENT APARNA MAHAL, VILEPARLE (E)
MahaRera Regn. No: P51800077501



REGENT VASUDEV 99, VILEPARLE (E)



REGENT MILAN CHHAYA, JOGESHWARI (E)



ADVENT NEEL, JUHU
MahaRera Regn. No: P51800032332



REGENT JEEVANTARA CHS LTD, VILEPARLE (E)
MahaRera Regn. No: P51800049161



REGENT AURUM, GIRGAON
MahaRera Regn. No: P51900047404



DEEPA CHS LTD, VILEPARLE (E)



TEJAL BHUVAN CHS LTD, VILEPARLE (E)



AANGAN, VILEPARLE (E)



REGENT GALAXY, MALAD (W)



SAKET, VILEPARLE (E)



OM MADHUSADAN, VILEPARLE (E)

COMPLETED PROJECTS



RAJ VAIBHAV, VILEPARLE (E)



AUDUMBER, VILEPARLE (E)



Site Address: Final Plot No. 377, TPS V,
Shradhanand Cross Road, Vile Parle East, Mumbai - 400057



Developers: **M/s. Regent Builders**
603, Inizio, Cardinal Gracious Road, Opp. P&G Plaza,
Chakala, Andheri East, Mumbai - 400 099.
Tel: 022-6166 8883/4 Email: info@regentgroup.co
Website: www.regentgroup.co



Design Architects: **Mr. Ashish R Solanki, Vile Parle East**
MCGM Architects: **Concrete Designs, Vile Parle East**
R.C.C. Consultants: **M/s. Sura & Associates, Andheri East**
Legal Advisors: **M/s. Kirti Nagda and Associates, Vile Parle East**



MahaRera Regn. No: **P51800077648** Available on the website <https://maharera.mahaonline.gov.in>



Disclaimer: All the images, pictorials, visuals, elevations, perspectives, illustrations, model, specifications, plans, designs, drawings, dimensions, maps, facilities, amenities, features, and other information/details herein conceptual, indicative and for representation purpose only and are not to scale, and is subject to the approval of the respective authorities. The Promoters/Developers/Architects reserve the right to add, alter, delete or replace any of these in the interest of the development, without any notice or obligation. This printed material does not constitute an offer or contract of any nature whatsoever between the Promoters/developers and the recipient. All transactions in this development shall be subject to and governed by the terms & conditions of the Agreement for Sale to be entered into between the parties.